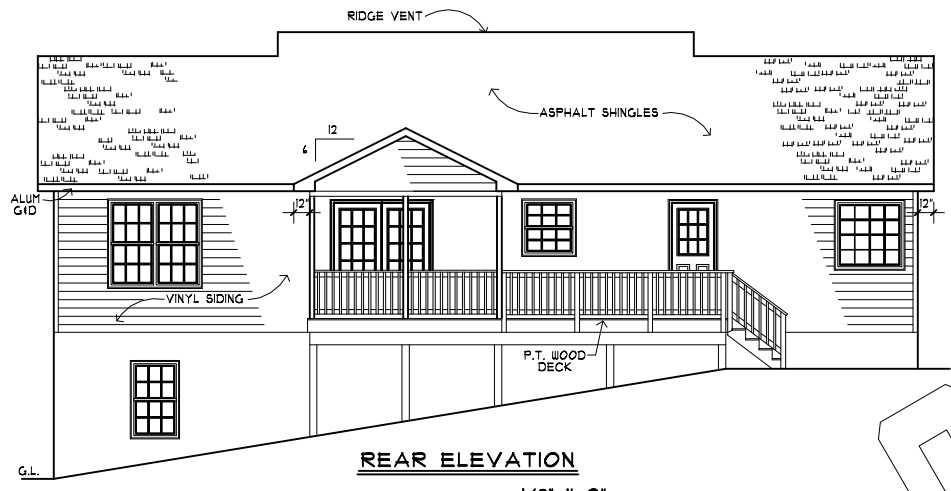


**FRONT ELEVATION**

— 3/16" = 1'-0" —

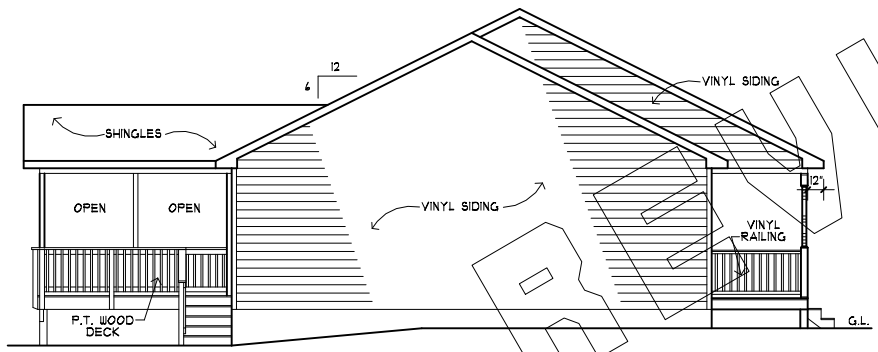
APPLICABLE CODE:  
VIRGINIA RESIDENTIAL CODE 2012 EDITION

SQUARE FOOTAGE	
1ST FLOOR	1620
BSMNT. (UNFIN.)	1620
FRONT PORCH	144
REAR PORCH	144
REAR DECK	168



**REAR ELEVATION**

1/8"=1'-0"



**LEFT ELEVATION**

1/8"=1'-0"



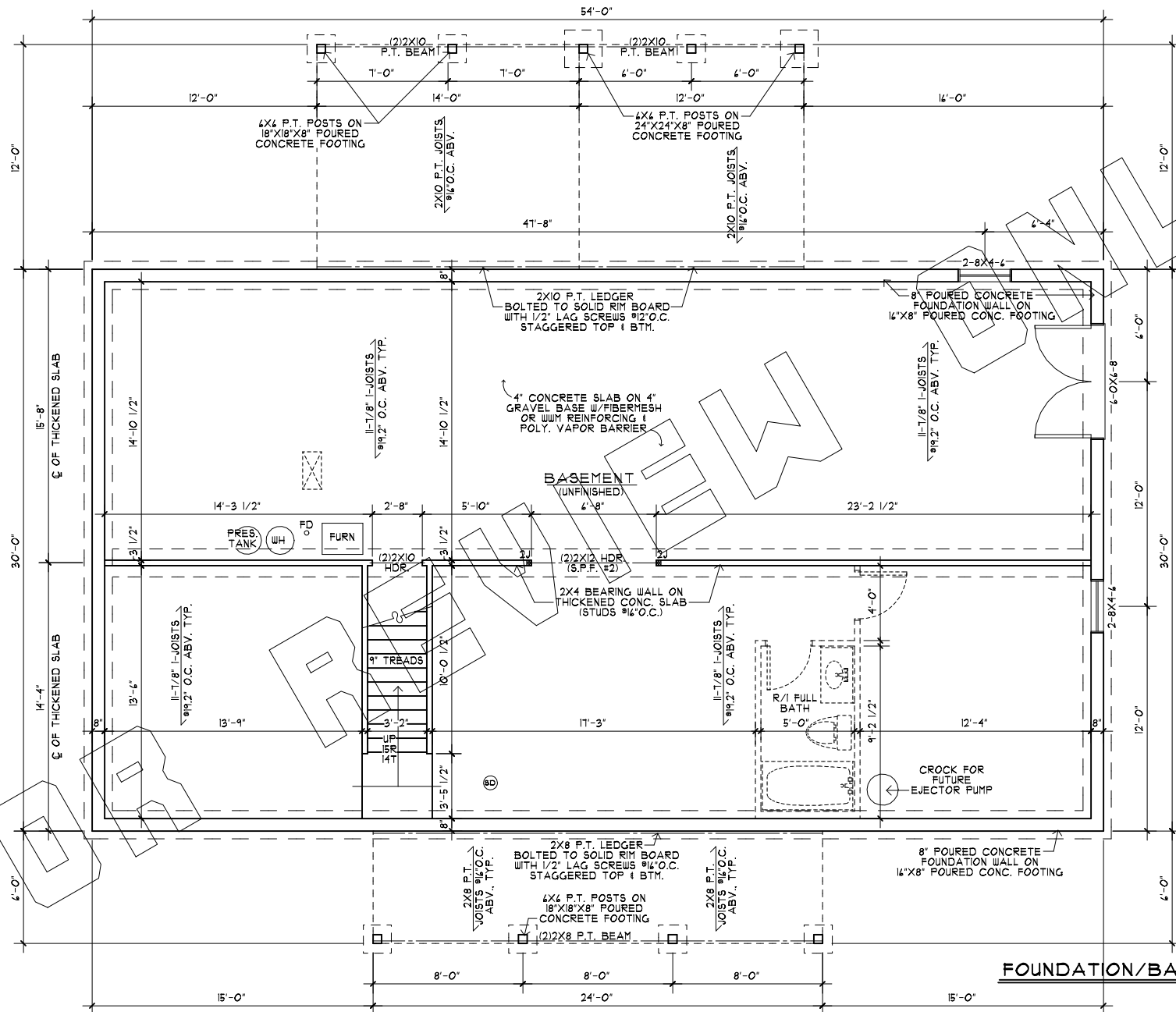
**RIGHT ELEVATION**

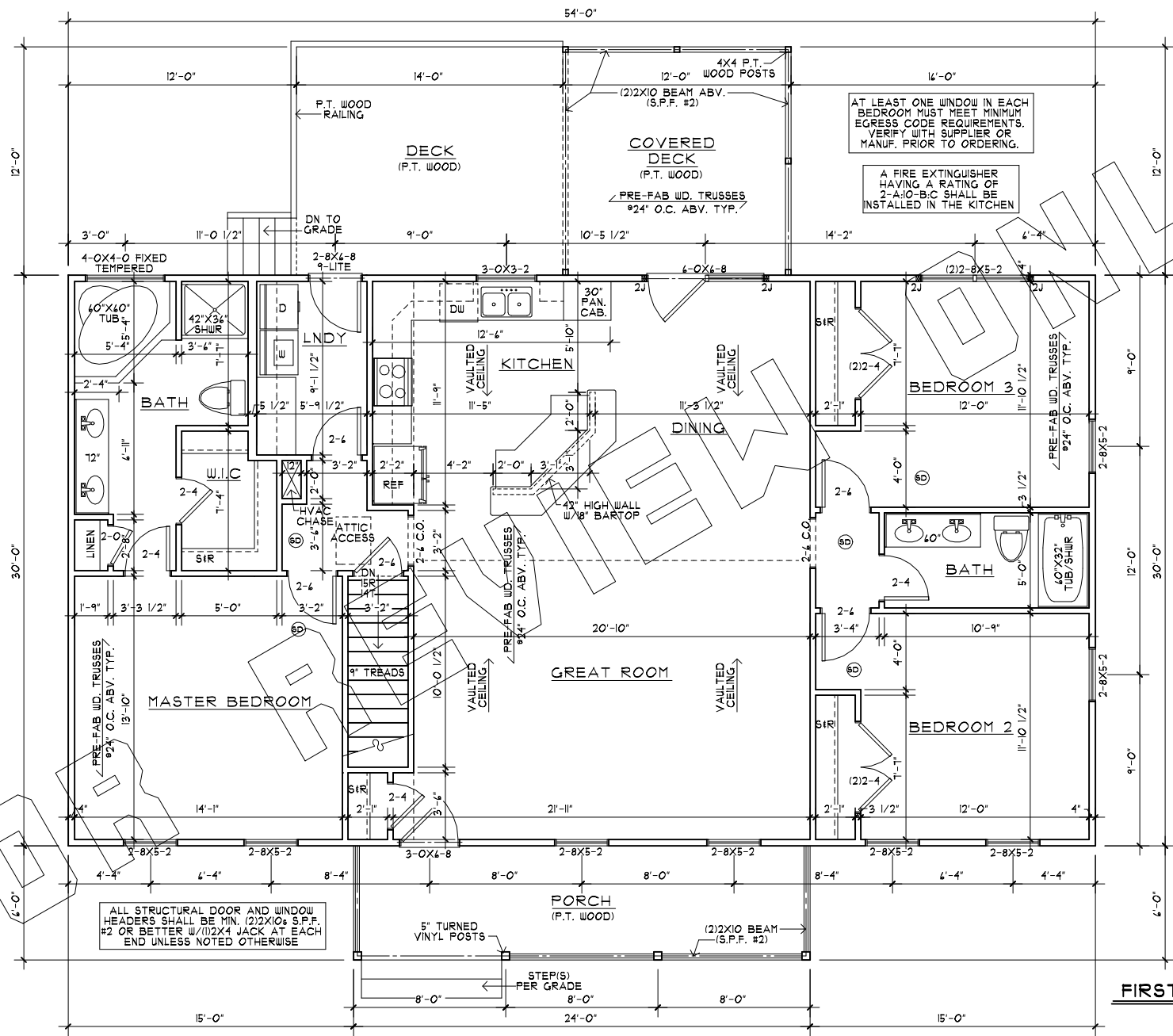
1/8"=1'-0"

FOR REVIEW ONLY

FOR REVIEW ONLY

FOR REVIEW ONLY





AT LEAST ONE WINDOW IN EACH BEDROOM MUST MEET MINIMUM EGRESS CODE REQUIREMENTS. VERIFY WITH SUPPLIER OR MANUF. PRIOR TO ORDERING.

A FIRE EXTINGUISHER HAVING A RATING OF 2-A:10-B:C SHALL BE INSTALLED IN THE KITCHEN

ALL STRUCTURAL DOOR AND WINDOW HEADERS SHALL BE MIN. (2)2X10 S.P.F. #2 OR BETTER W/ (1)2X4 JACK AT EACH END UNLESS NOTED OTHERWISE

**FIRST FLOOR PLAN**

— 3/16"=1'-0" —