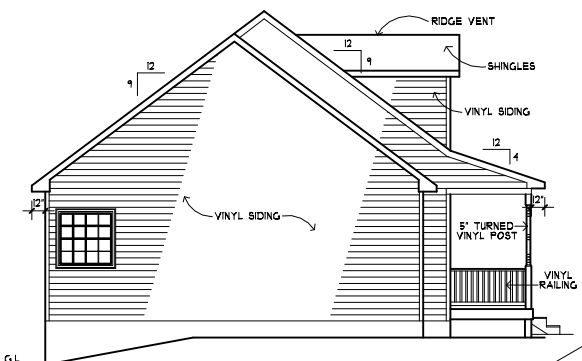


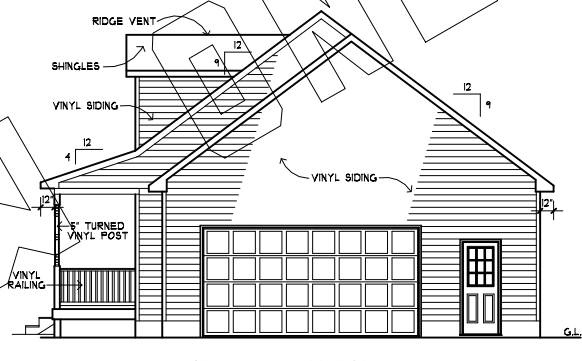
**REAR ELEVATION**

— 3/16"=1'-0" —



**LEFT ELEVATION**

— 3/16"=1'-0" —



**RIGHT ELEVATION**

— 3/16"=1'-0" —



**FRONT ELEVATION**

— 1/4"=1'-0" —

12'-8" ROOF LEAVE TO RIDGE HEIGHT  
9'-1 1/8" 1ST FL. WALL HEIGHT  
9'-0" FND. WALL HEIGHT

APPLICABLE CODE:  
VIRGINIA RESIDENTIAL CODE 2009 EDITION

SQUARE FOOTAGE	
1ST FLOOR	1814
BSMT. (UNFIN.)	1814
GARAGE	414
FRONT PORCH	240

